

Atherton

COMPANY: Atherton
ADDRESS: 364 DAREBIN ROAD
THORNBURY VIC 3071

CONTACT: LEIGH PIKE
PHONE: +61 3 9497 2500
FAX: +61 3 9497 1190
WEB: www.atherton.net

Atherton is a small to medium size manufacturing company, which designs and manufactures a range of infection control and food services equipment.

Founded by Fred Atherton in 1889 in Melbourne, the company has been operated through four generations by the Atherton family.

Atherton is now a world leader in infection control products manufacturing equipment for hospitals, clinics, research laboratories and institutions. The product range comprises of sterilizers, bed pan flushers, washer disinfectors, warming cabinets, drying cabinets and transfer trolleys.

Atherton food services are specialists in the manufacture, co-ordination and installation of all types of stainless steel benching, bars and service areas for commercial and institutional applications.

Creative stainless steel products is a specialty where Atherton can provide a solution to your special project.

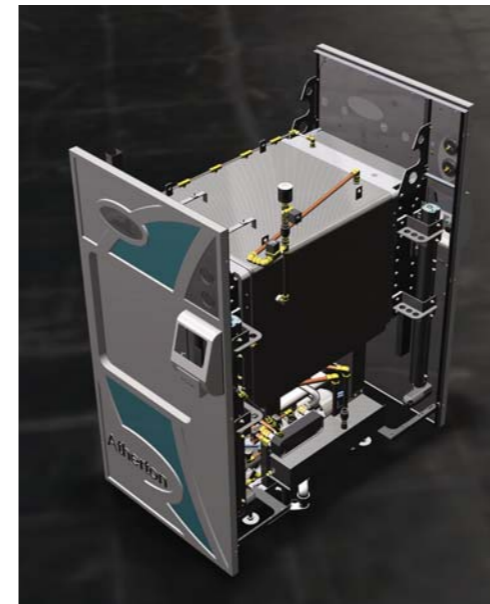
All this is backed by a 24 hours, 7 days a week Service Division.

stainless reputation since 1889 stainless steel solutions

The Atherton design and production teams are focused on two main markets across Australia and overseas.

Infection Control Product comprises high capitol cost equipment, incorporating pressure vessel, piping, valve and electrical systems and reasonably sophisticated control and interface systems. All packaged on a product that must take up the smallest footprint sensibly possible. The product design review has shortened dramatically over the past decade, and expense of prototyping products can be financially crippling and resource draining

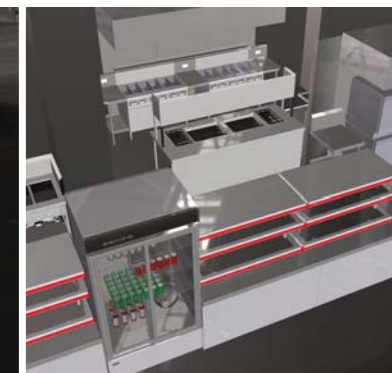
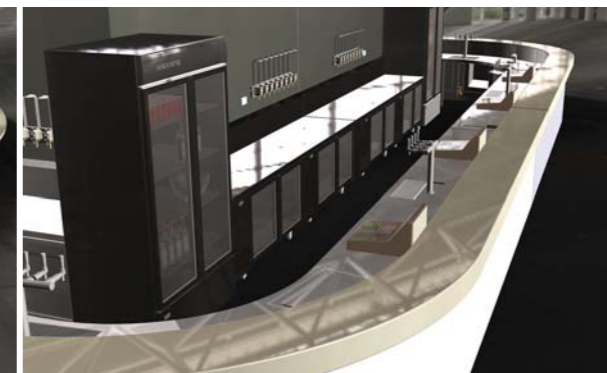
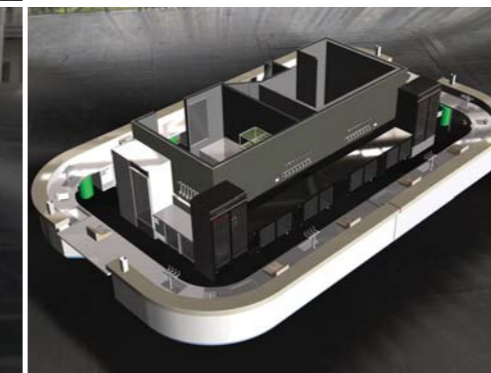
Food Service side of Atherton are either design/construct excersises, or built to specification and are essentially a "one off" build excersise. Projects require, design documentation, manufacture, site works and commissioning activities, all within tight periods. In either case, time is always of the essence, and fast powerfull design tools are required.



Recent food services projects include:

Melbourne Convention Centre - Basement Production Kitchen
Kingston Centre Hospital - Central production Kitchen
Melbourne Rectangular Stadium (AAMI Park) - All Kitchens and Bar outlets
Crown Third Tower (Crown Metropol) - Kitchen and Bar equipment
Maze Restaurant - Kitchen and Bar equipment

The solution to the problem is digital prototyping and simulation, and this is where the integrated 3D design solution offered by the Autodesk suite of applications comes to bear. The time saved during the design development phase is significant, and when considering the efficiencies of the "first build" process the financial benefit of what is usually considered overhead burden becomes apparent.



Vault Manufacturing allows the resource flexibility Atherton requires, with designers nationally sharing a common database while working on collaborative designs. This secure data management system means designers are confident they are using current data as old versions archive automatically.

One particular benefit of the Autodesk suite is the ability to provide 3D images for the client to review. The fact of the matter is that few people without training can read traditional plan and elevation drawings correctly. Being able to present an accurate rendition of what the client is paying for without generating excessive cost is a significant benefit.

The ability to produce 3D documentation also speeds up the production process by presenting manufacturing personnel with an easily comprehended overview of the main product and subassemblies and how it all "goes together". In addition, output data from Inventor Professional supports the manufacturing facilities. Through third party CAM software, Inventor drives our laser cutter, brake presses, machining centre and robotic welder.