

COMPANY: The Buchan Group
 ADDRESS: 342 WICKHAM STREET
 FORTITUDE VALLEY, QLD 4006

CONTACT: GREG SHEEHAN
 PHONE: +61 7 3859 9222
 FAX: +61 7 3859 9234
 WEB: www.buchan.com.au

The Buchan Group is one of the most experienced architectural groups in Australasia, with a design philosophy that comes from a thorough understanding of the practical and aesthetic requirements of the project and its users, and a commitment to designing buildings which are fit for their purpose.

We are passionate about design, and constantly strive to create solutions that work, right down to the smallest detail.

We operate across nine locations in Australia, New Zealand, England and the United Arab Emirates, with a total staff of over 300 people. Local teams and directors' expertise, allied with the Group's broad experience and resources provide an integrated range of design services including architecture, master planning, interior design and graphic design across a diverse range of project types.

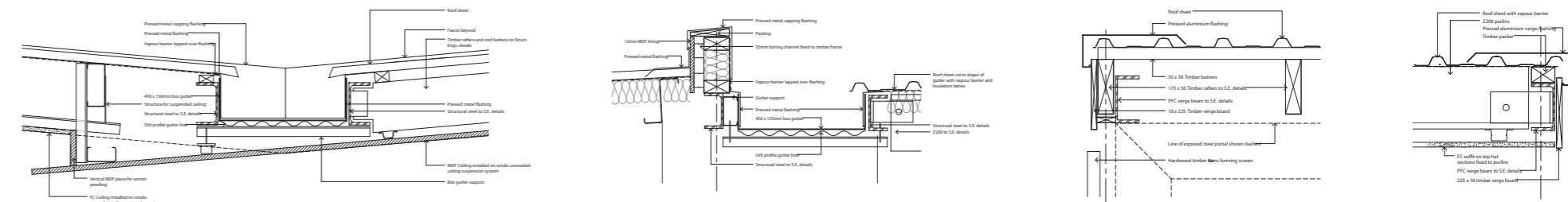
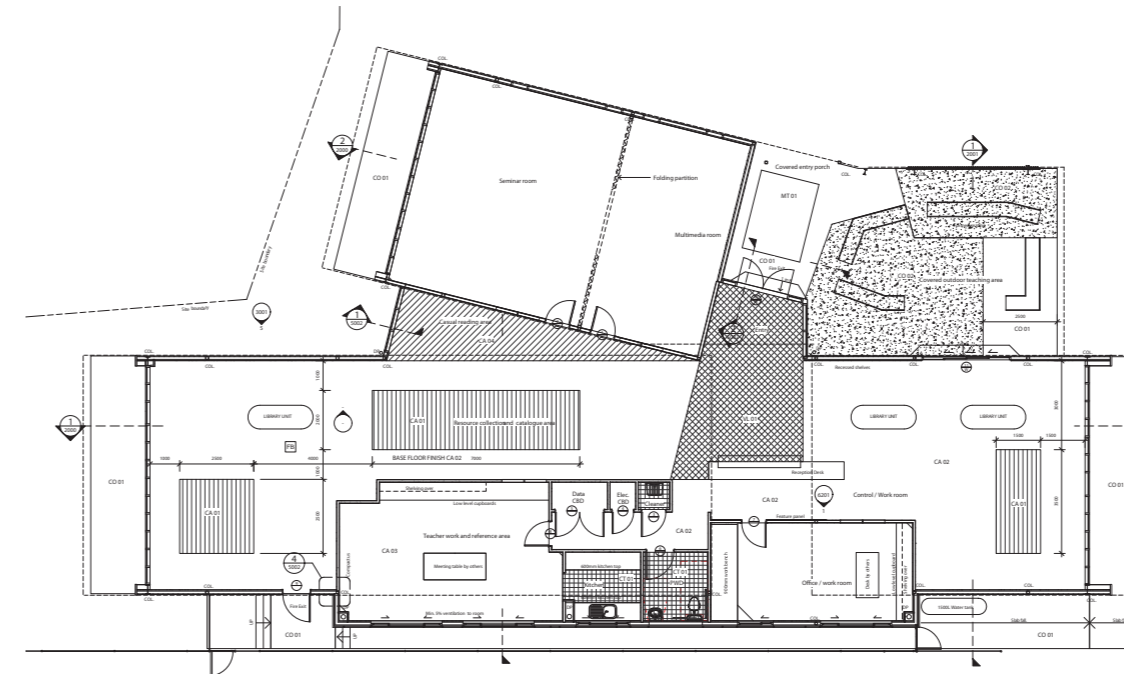
Other current and recent projects include: the Surfers Paradise Hilton Hotel and Residences, Robina Town Centre, Jupiters Hotel & Casino, Q1 Tower and Harbour Town on the Gold Coast; Fortitude Valley Railway station, Mt Ommaney Centre and Wintergarden redevelopment in Brisbane; Element on Coolum Beach; Peppers Resort and Itara Riverway in Townsville; Riverlink Shopping Centre in Ipswich; the Apple Flagship Stores in Sydney and Beijing; Lucient and the Rialto Intercontinental Hotel in Melbourne; BaySide Apartments and Christchurch Art Gallery in New Zealand; and Westfield London in the UK.

detailed designs that work educational spaces

Enoggera State School Resource Centre

Developed as part of the BER program, the design of the new Resource Centre at Enoggera State School presented The Buchan Group with the opportunity to produce a striking building using the Revit platform from the design stage through to construction.

The strong forms stand in contrast to the traditional timber clad school buildings adjacent, so accurate 3D visualizations were essential in giving the client the necessary understanding and confidence to support the design.



Hooded glazed walls cast light into the volume of the building and give a sense of connection to the exterior, creating a balanced space for learning and discovery.

The interior design responds to the volume in its fresh treatment, adding a sense of arrival and orientation with entry elements which are reinforced by the playful triptych in the reception space.

This project was our first to use Revit throughout all stages from design to documentation. Interdisciplinary coordination through detailed design was assisted greatly through collaboration in a 3D format and allowed the documentation process to be conducted efficiently.

Compatibility with 3Ds Max allowed efficient production of marketing renders and also for an exceptionally accurate description of design intent for the contractor.