

COMPANY: Liquid Blu Pty Ltd  
 ADDRESS: Suite 6, 34 COMMERCIAL ROAD  
 NEWSTEAD QLD 4006

CONTACT: YURI DILLON  
 PHONE: +61 7 3257 1094  
 FAX: +61 7 3257 1093  
 WEB: www.liquidblu.com.au

Liquid Blu is a team of architects and designers who share the vision of creating inspiring environments that support and enhance the human condition. We have no set theories or styles of design, but view Architecture as a dynamic discipline that responds directly to the needs of people, place and time.

Our design methodology is consultative, contemplative and interactive. It provides the opportunity for project owners and stakeholders to meaningfully engage with the design process in alignment with the values and outcomes most meaningful to them – be they commercial, social or personal, or a combination of all three.

Each client and site is viewed as a unique constellation of opportunities, constraints, history and dreams. Every new project provides the opportunity for both design team and client, to create a working relationship where design solutions are inspired, pragmatic and elegantly executed.

We measure our success not through accolades and awards, but how, through the medium of design, we enhance and amplify the vision of our clients.

## flexible design adapting to development

### RR Ranch - Bangalow, Australia

Located in the rolling pastures behind Byron Bay, this private home embraces the lifestyle and life direction of our client on a holistic level. Nestled at the base of a natural valley, the home shares a unique connection with the surrounding rural environment.

The design aesthetic takes inspiration from the classic 'ranch' style, reminiscent of Northern Californian wine country. This is carefully blended with a modern local vernacular, emphasizing the immediate context and environmental conditions.

The home comprises four nodal zones linked with free flowing breezeways. The segmentation of each zone allows each space to be designed with a particular activity, mood and privacy level.



Designed to achieve the highest level of environmentally sustainable awareness, the home is self sustaining in terms of electricity generation and water collection with mass solar and rain water collection areas.

The use of Revit Architecture became integral to the design process. Moving the design from paper to sketch to tangible 3D object, we used the model to test ideas quickly, observing impacts from all angles.

The ability to add specific shadow casting has allowed us to incorporate ESD principles with precision, allowing real time analysis of building elements.



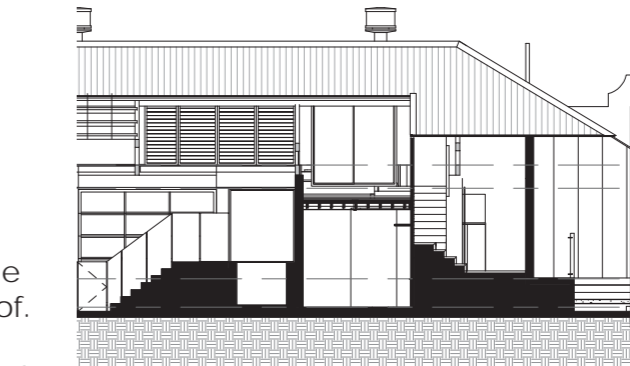
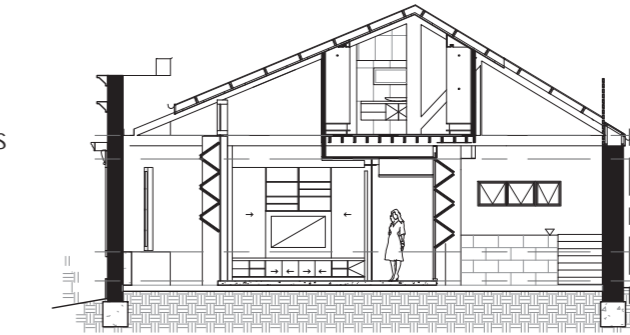
### Warehouse 264A - Brisbane, Australia

Warehouse 264A is the redevelopment of David Elder's blacksmith shop originally constructed in the early 1920's. Owned by Henry Roberts, and located in 'Spring Hollow' within 2km of Brisbane's CBD, the iconic heritage listed warehouse had been home to Malley's Whitegoods for 40 years.

Malley's most remembered in 1952 when they manufactured the first cooler under the trade mark "esky".

The redevelopment into a domestic residence with attached apartment was extremely challenging. The design philosophy of 'a box within a box', allows the public and private spaces to be layered in a manner providing control and flexibility.

Courtyard spaces have been created behind the original facade by carefully peeling back the roof. Sleeping areas have been inserted between the strut and roof beam assembly like floating pods.



The ability to visualise the internal spaces offered within the complex building allowed a complete understanding of all spaces and their relationships.

Cutting multiple sections revealed a matrix of unique spaces. Each view exposed a new and complex collection of spatial relationships both laterally and vertically.

Witnessing the realisation of the Revit model coming to life during construction has been ultimately rewarding.