

Mirvac is a leading integrated real estate group, listed on the ASX with approximately \$27.2 billion of activities under control across the real estate investment and development spectrum.

Established in 1972, Mirvac has more than 36 years of experience in the real estate industry and has an unmatched reputation for delivering quality products across all of its businesses.

Mirvac is one of the leading brands in the Australian residential market and has a proven track record of delivering innovative and quality products that exceed customers' expectations.

Mirvac has produced some of Australia's most renowned residential projects including Magenta Shores on the Central Coast, NSW; Walsh Bay in Sydney, NSW; Ephraim Island on the Gold Coast, QLD; Yarra's Edge, VIC; and The Peninsula at Burswood in Perth, WA.

Standing behind this success at every step are the people of Mirvac - the architects, planners, designers, builders and marketers. Their expertise, commitment to quality, sustainable outcomes and dedication to the job at hand ensures Mirvac's enviable position in the marketplace.

## tower 6 project burswood wa

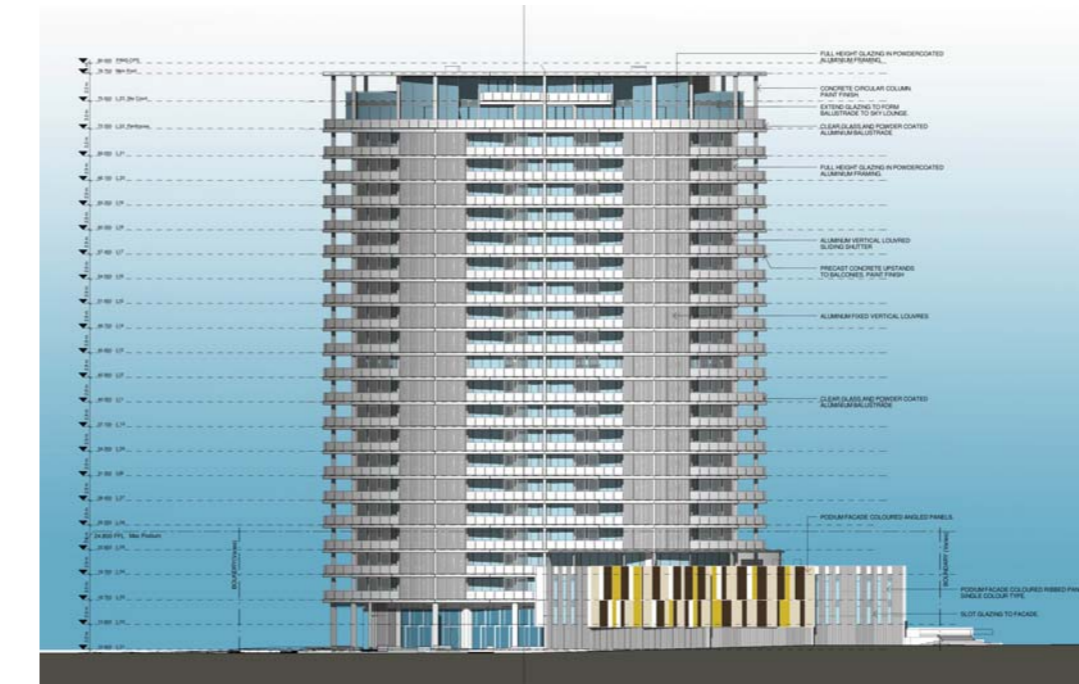
Tower 6 is part of Mirvac's master planned The Peninsula, Burswood development. The site is situated just five kilometres from the Perth CBD, bounded by the golf course, the entertainment complex and the stunning Swan River.

The guiding planning principles for Tower 6 are aligned to those of the Peninsula master plan. Views and view corridors down roads and pathways are maintained, the architectural character of the neighbourhood is preserved, apartments are oriented to maximise access to sunlight, and neighbour overlooking issues are minimised.



The project is a 23 storey tower and features a mix of contemporary, luxurious apartments, carefully positioned to maximise the effect of views of the city, river and hills, and designed with meticulous attention to detail.

All apartments are designed from the inside out, in a thorough process based on living experience. Thoughtful building orientation and window placement, combined with use of adjustable louvre screens, ensures views are maximised whilst maintaining year round comfort.



Mirvac Design team used Revit as the main design and documentation software, with 3D Max as supplementary software for generating marketing style graphics.

The complete construction documentation has been done in Revit system, which is becoming the main design software system used by Mirvac Design.

The shift to the reliable parametric system platform will allow Mirvac to use BIM technology for the design, construction and operation phases of their projects.

