

COMPANY: Mitchell Brandtman
ADDRESS: 29 WOODSTOCK ROAD
TOOWONG, QLD 4066

CONTACT: DAVID MITCHELL
PHONE: +61 7 3327 5000
FAX: +61 7 3870 1344
WEB: www.mitbrand.com

Proudly Australian, Mitchell Brandtman is the driver of positive industry change.

For over 40 years, our firm has been regarded as a leader in cost and risk management services through the speed of adoption of new technology, coupled with a drive to deliver personal and cutting edge service.

Today, with the experience we have gained from over 10,000 projects, we make a difference to the businesses we work with and find new ways to deliver value and cost efficiencies without compromising design intent.

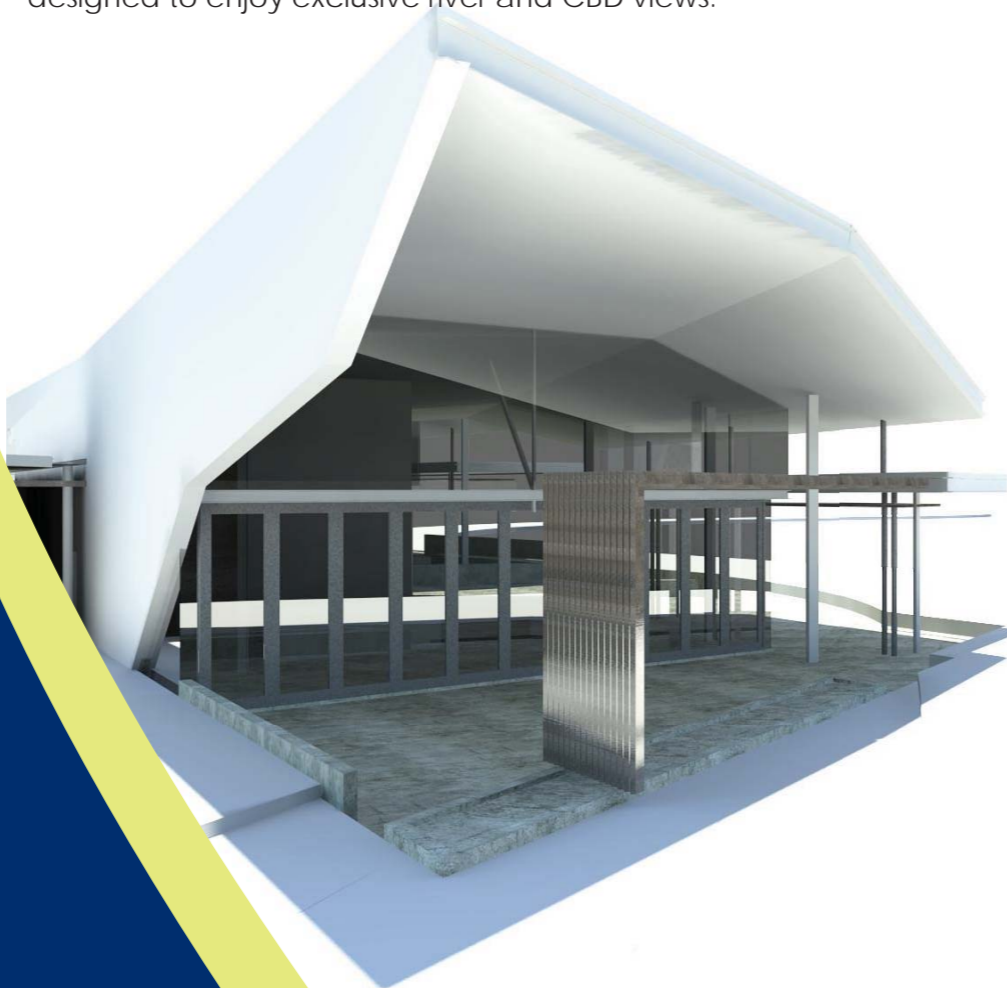
Mitchell Brandtman is underpinned by a commitment to, and use of, new technology and software. From measurement to costing, our team is leading the BIM (Building Information Modeling) revolution and utilises 3D and 5D modeling to deliver cost certainty and better outcomes for our clients.

We have a permanent Systems Analyst and an IT Manager who both work to continually maintain and improve our existing software and design new software packages to suit the industry and our clients' changing needs.

boardwalk redevelopment south bank brisbane

The Boardwalk Redevelopment at South Bank will be Brisbane's newest riverside dining precinct and will set new standards in CBD dining.

Set on the southern edge of the Brisbane River, within the world renowned Parklands, the development will comprise six unique dining opportunities. All tenancies will enjoy ambient alfresco dining areas designed to enjoy exclusive river and CBD views.



The retail mix will consist of a variety of quality and refined restaurants, bars and cafés that celebrate the best that Queensland has to offer.

Dining excellence starts with location and this development is second to none.

Collaboration is the key to the success of this iconic Brisbane project.

Revit models from both the Architect and the Structural Engineer have been supplied to Mitchell Brandtman which allowed our team to conceptualise and gain a more comprehensive and visual understanding of the project.



By combining these Revit models with our CostX expertise our team was able to present more accurate quantities and deliver innovative cost solutions for the project.

Through IT intergration and value management, Mitchell Brandtman is utilising cutting edge practises and software to provide our clients with relevant advice and cost certainty.

Our facilities include CostX, Autodesk Revit Architecture 2010 and AutoCAD Architecture.

The South Bank Boardwalk Redevelopment is expected to be completed by mid 2011.

