

COMPANY: WALTER BROOKE
ADDRESS: 49 GREENHILL ROAD
WAYVILLE, SA 5034

CONTACT: IAN HORE
PHONE: +61 8 8272 4166
FAX: +61 2 8271 7967
WEB: www.walterbrooke.com.au

Walter Brooke is one of Adelaide's leading professional practices with Architects, Interior Designers and Landscape Architects working collaboratively with our clients to intelligently solve their needs

LISTEN - We listen to our clients, we hear and understand.

EVOLVE - We design with intelligence, experience and vision
- a synergy of youthful energy and mature sensibility.

REALISE - We challenge and nurture the essence of an idea to restore, recycle, conserve and construct. The result is enduring design.

Walter Brooke embarked on the implementation of Revit in early 2009, and since then we have produced our BER school, Educational and Residential projects both efficiently and expediently, thus proving the worth of the product in the market place.

Our clients have reaped the benefits of the Revit experience. Throughout the design process clients have had the knowledge that design and documentation is holistic and interactive, whilst providing accurate and confident design solutions within short time frames.

educational design BER school projects

Revit has provided a platform that allows Walter Brooke to design and create in both sketch and working drawings phases. A fully integrated process has been developed by Walter Brooke, with connectivity to the architectural specification from the technical working drawings.

Walter Brooke's Revit and AutoCAD platforms have been integrated in a seamless and symbiotic manner. This allows our traditional 2D Architectural and Interior Designers to work in parallel with Revit Designers.

We believe we have the best of both worlds, where the strengths of both platforms can be maximised and the knowledge base of our staff utilised.

The success for all our projects relies on Walter Brooke's commitment to staffing, strategic planning, KarelCAD training and an ongoing allocation of time and resources for research and development.



Prince Alfred College, Kent Town SA: Assembly Hall and Pavilion Project

Internal renovation, and fire and life safety upgrade to the existing Assembly Hall strengthens the original 1950s interior. A new single storey 300m² function, exhibition and foyer addition to the Assembly Hall offers catering, display and storage facilities.

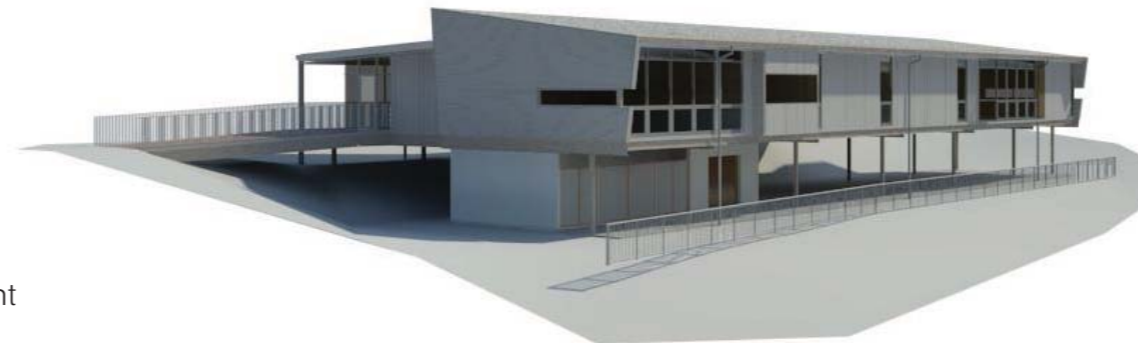
Built on the site of the first pavilion for the College this new addition is a contemporary interpretation of the modernist context. Sited on the edge of the College oval the addition offers much needed function and educational space.



St Johns Grammar Junior School, Belair SA: Centre for Creativity

St Johns Grammar School is located in a picturesque leafy suburb in the Adelaide Hills adjacent the Belair National Park. The sensitive and complex nature of this sloping site provided an opportunity to adopt the notion of a tree house like design, elevating the building while providing an open under covered area and maximising play space for the students.

The Centre for Creativity consists of integrated spaces for the school's library, art/practical room and ICT rich environments including media production. The elevated design provides at grade access for all students to this inviting and innovative centre.



Mercedes College, Springfield SA: Junior School Hall and Staff Facilities

A two storey, 1100m² project, consisting of a 14m x 21m clear internal multi-purpose space for junior school students allowing access directly to the oval. First floor consists of open plan staff lounge, utility zones, library and large kitchen.

An iconic two storey Pavilion style building set on the perimeter of the Colleges main oval. This project required careful planning and design due to its functionality, unique location and sloping site.

The design has included many references to existing brick and stone buildings and reflects the history of the College and the site.

