

COMPANY: Woodhead
ADDRESS: 343 PACIFIC HIGHWAY
NORTH SYDNEY, NSW 2060

CONTACT: JAN CHRISTEL
PHONE: +61 2 9964 9500
FAX: +61 2 9964 9683
WEB: www.woodhead.com.au

Established in 1927, Woodhead is regarded as one of the leading architecture and design consultancies in Australia and Asia. The key to that reputation is an approach that emphasises high quality, integrated services and tailor made solutions for all projects.

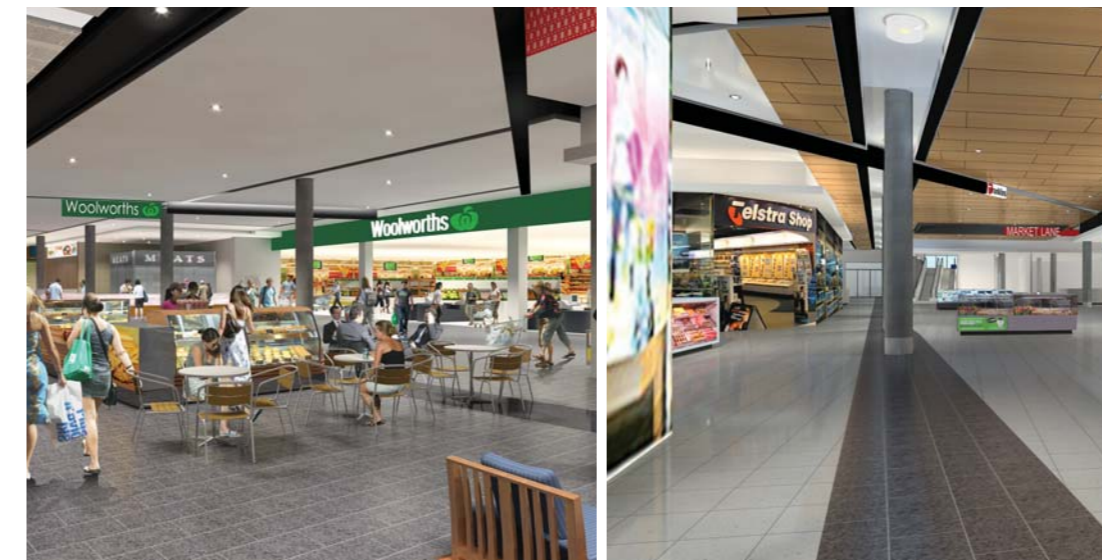
Employing over 300 staff, Woodhead's network of 10 offices throughout Australia and Asia enables the consultancy to combine local presence with access to a range of expertise in the core disciplines of architecture, interior design, urban design and planning, graphic design and facilities management.

Woodhead's design philosophy is based on the interwoven activities of benchmarking, innovation and collaboration with the end goal of delivering design supportive of its clients' endeavours and which contributes to the fabric of the broader community.

creating public environments stockland merrylands

The Stockland Merrylands development is a 65,000m², two level retail redevelopment over several stages which will ultimately replace the existing 25,000m² shopping centre with a new retail complex.

The development is designed to meet the needs of today's discerning consumers. This development will feature a substantial engagement with the local town centre by maximising external retail opportunities thus providing a catalyst for its redevelopment.



The extent of this development will be the first 2 stages of the ultimate complete centre redevelopment and will address not only the current deficiencies but bring a whole new generation of retailing to Merrylands in such a way that the existing customer base is not alienated.

The architectural design philosophy for the development will incorporate a contemporary language encompassing clean crisp lines with reference to a distinctive, modern Australian ambience in terms of an emphasis on light and shade through the extensive use of glass and wide angular roof overhangs and louvred edges.

Materials and finishes will exude a warm, contemporary ambience.

The project Architectural and Structural design was completed using Revit with and visualisation being produced through 3ds Max.

